



INSTRUCTION BULLETIN

No. 340756
Machine: T7, SSR
Published: 02-2019
Rev. 02

NOTE: DO NOT DISCARD the Parts List from the Instruction Bulletin. Place the Parts List in the appropriate place in the machine manual for future reference. Retaining the Parts List will make it easier to reorder individual parts and will save the cost of ordering an entire kit.

NOTE: Numbers in parenthesis () are reference numbers for parts listed in Bill of Materials.

Installation instructions for **kit number 9000145**

SYNOPSIS / PROBLEM:

This kit contains the parts needed to install a 800 mm squeegee onto the T7/SSR model scrubbers. Please follow step-by-step instructions.

SPECIAL TOOLS / CONSIDERATIONS: NONE

(Estimated time to complete: 1 hour)

PREPARATION:

1. Stop machine on a clean level surface.
2. Raise the scrub head to the raised position.
3. Turn off the machine and remove the key.

FOR SAFETY: Before leaving or servicing machine, stop on level surface, and turn off the machine.

INSTALLATION:

1. Remove the vacuum hose from the rear squeegee assembly. Refer to Fig. 8.
2. Remove the knobs holding the rear squeegee assembly onto the lower squeegee channel arm. Refer to Fig. 1.

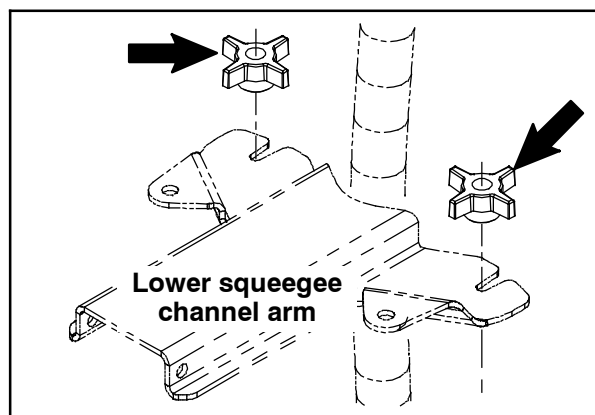


FIG. 1

3. Remove the rear squeegee assembly from the machine.

NOTE: For the remainder of this Instruction Bulletin, refer to Fig. 8 for part locations and orientation of parts on the squeegee assembly.

4. Use the provided hex screws (8), flat washers (9), sleeves (10), and hex nuts (11) to install a bumper wheel (7) onto each end of the new squeegee frame (1). Refer to Fig. 2.

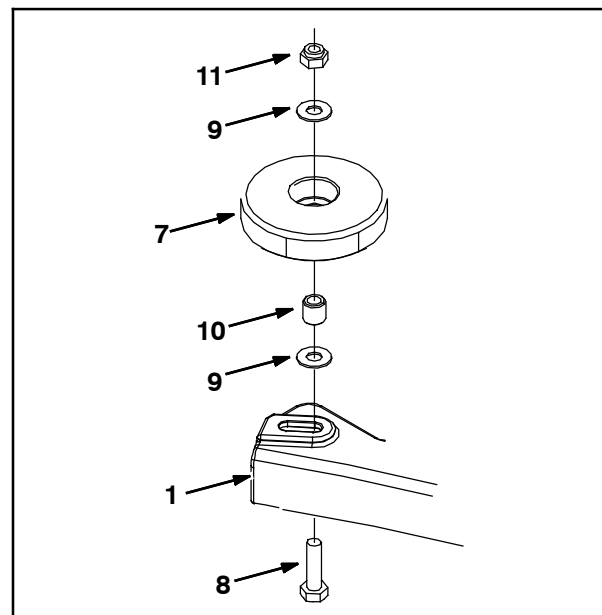


FIG. 2

5. Use the two provided star knobs (3) to install the new squeegee retainer plate (2) onto the squeegee frame (1). Do not tighten star knobs. Refer to Fig. 3.

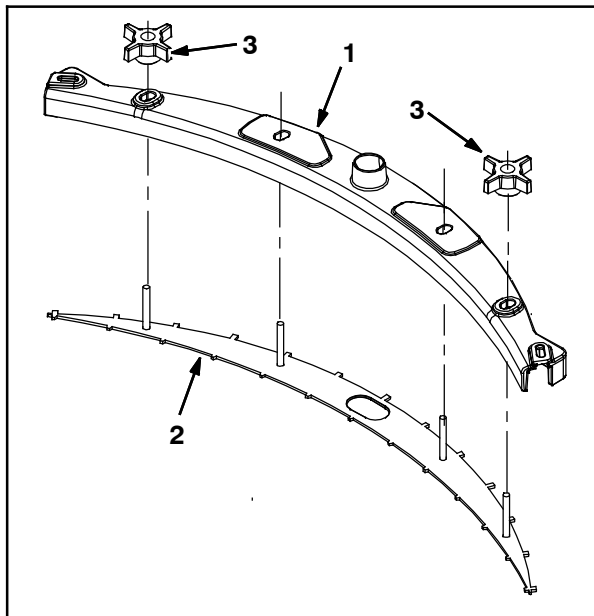


FIG. 3

6. Install the new front squeegee blade (4) onto the squeegee retainer plate (2). Be sure the holes in the front squeegee blade are hooked onto the squeegee retainer plate tabs. Refer to Fig. 4.

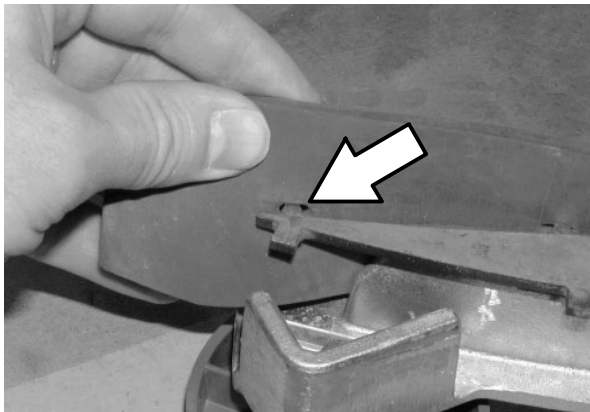


FIG. 4

7. Slightly tighten the two star knobs (3). Refer to Fig. 3.

8. Install the new rear squeegee blade (5) onto the squeegee retainer plate (2). Be sure the holes in the rear squeegee blade are hooked onto the squeegee retainer plate tabs. Refer to Fig. 5.

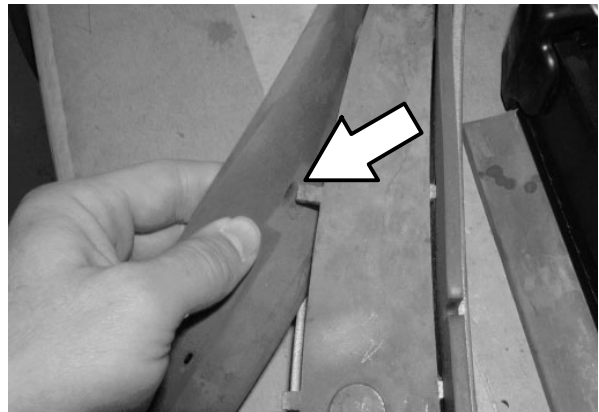


FIG. 5

9. Slide the squeegee strap assembly (6) into the squeegee frame (1). Seat the squeegee strap assembly flanges inside the retainers on squeegee frame. Refer to Fig. 6.

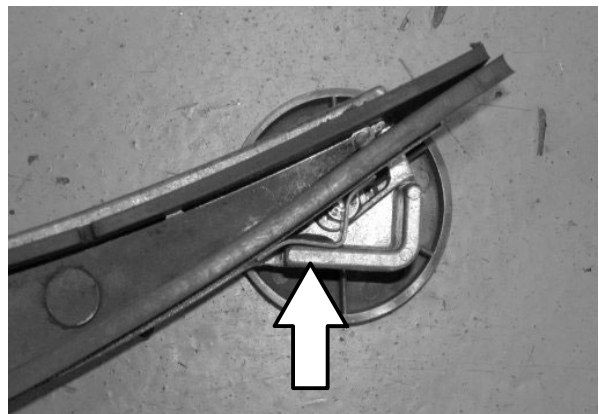


FIG. 6

10. Tighten the squeegee strap assembly (6) tension latch. Refer to Fig. 7.

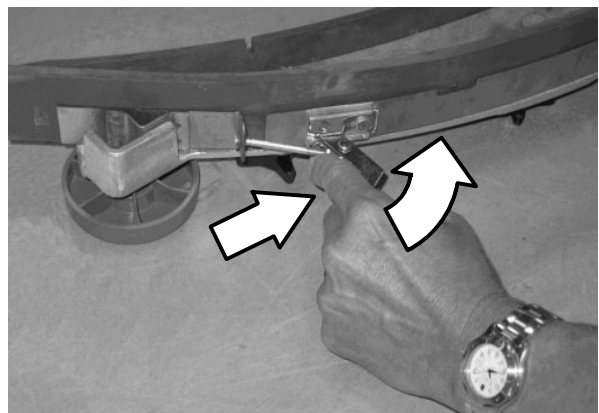


FIG. 7

11. Tighten the star knobs (3) to secure the squeegee retainer plate (2) into place inside the squeegee frame (1). Refer to Fig. 8.

12. Use the two remaining star knobs (3) to install the squeegee assembly onto the lower squeegee channel arm. Refer to Fig. 8.

13. Install the vacuum hose onto the rear squeegee assembly. Refer to Fig. 8.

14. Test machine to ensure the rear squeegee functions properly.

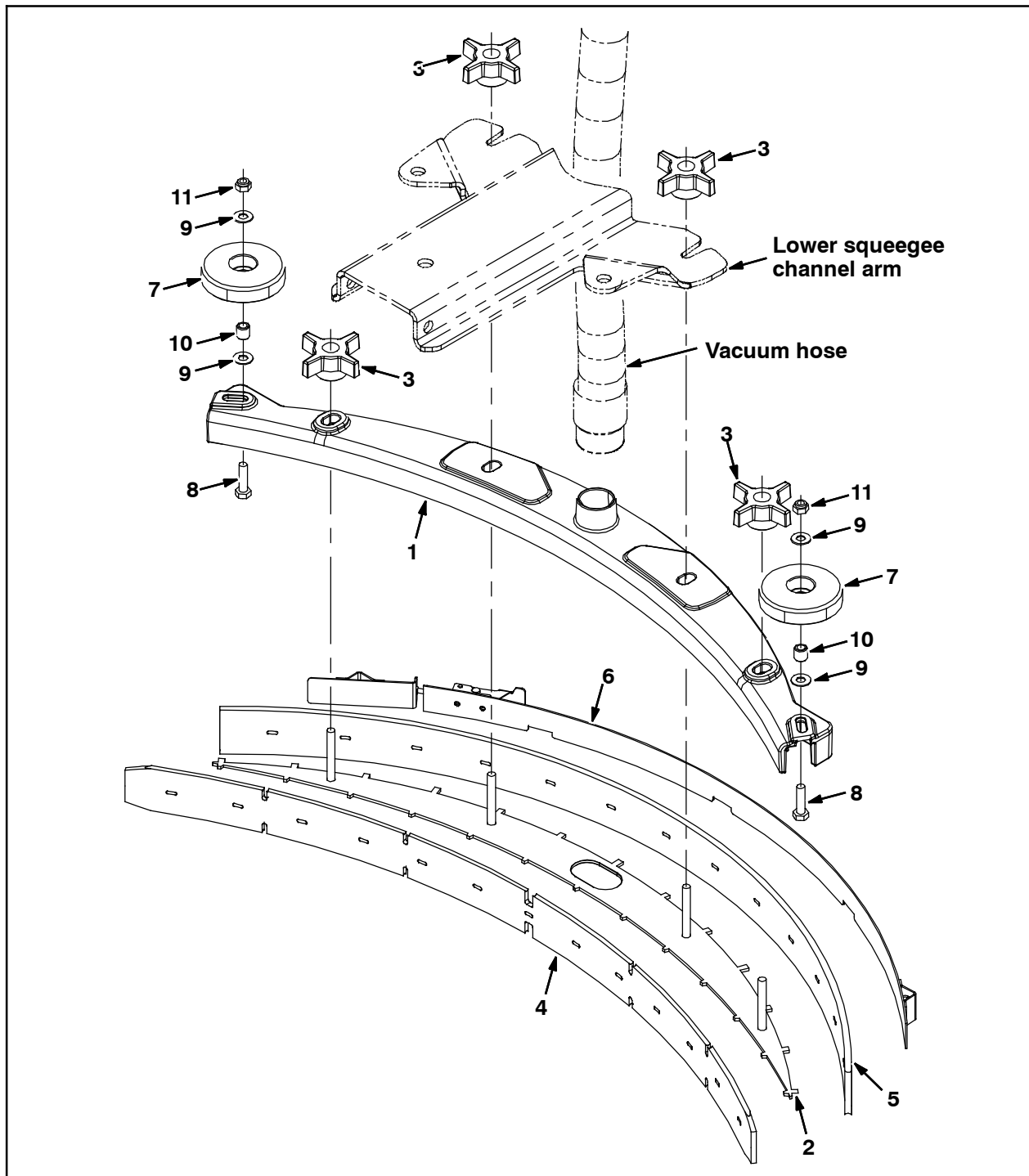


FIG. 8

Bill of Materials for Kit, Cl, Squeegee [800 mm]- 9000145

| | Ref. | Tennant Part No. | Description | Qty. |
|---|-------------|-----------------------------|--|-------------|
| ▽ | | 9000145 | Kit, Cl, Squeegee [800 mm] | 1 |
| ▲ | 1 | 1012964 | Frame, Sqge, 800mm | 1 |
| ▲ | 2 | 1013395 | Plate Wldt, Sqge, Retainer, 800mm | 1 |
| ▲ | 3 | 1074204 | Knob, Star, 2.75D 4Ear 1.1L M8 X 1.25 Thru, Y (Yellow) | 4 |
| ▲ | 4 | 390923 | Blade, Sqge, Front, 800mm Linatex, 41.5L | 1 |
| ▲ | 5 | 390922 | Blade, Sqge, Rear, 800mm Linatex [44.0L] | 1 |
| ▲ | 6 | 1013974 | Strap Assy, Sqge, 800mm | 1 |
| ▲ | 7 | 1010560 | Wheel, Bmpr, 80D X 25W, Non- marking | 2 |
| ▲ | 8 | 09011 | Screw, Hex, M8 X 1.25 X 30, SS | 2 |
| ▲ | 9 | 140027 | Washer, Flat, 0.35B 0.75D .04, SS | 4 |
| ▲ | 10 | 222460 | Sleeve, P/M, 0.496D 0.318B 0.50L 430SS | 2 |
| ▲ | 11 | 08713 | Nut, Hex, Lock, M8 X 1.25, NL, SS | 2 |

TENNANT COMPANY
P. O. Box 1452
Minneapolis, MN 55440-1452